

Miccosukee Tribe of Indians of Florida

Steve Terry: Land Resources Manager

Misti Little: Environmental Specialist

Rory Feeney: Fish and Wildlife Director



Invasive Species Programs

- Melaleuca Removal at Sherrod Ranch, Hendry County
- Description
 - Melaleuca removal is done through Aquatic Vegetation Control using mitigation monies collected from Tribal members for several COE 404 permits
- Objective
 - To remove melaleuca from the property in order to reestablish cypress, oak and under story shrubs.
- Partners
 - Aquatic Vegetation Control, a private company
- Start/End Dates
 - 2004-currently ongoing as needed.
- Status
 - Ongoing as funding is available
- Funding (FY): Tribally Funded
- Annual Summary
 - Currently about 89 acres have been treated.



2008 Everglades Invasive Species Summit

Treated with 25% Aquastar, 25% Habitat and 50% Water



Invasive Species Programs

- Brazilian Pepper Removal on Sherrod Ranch, Hendry County
- Description
 - Brazilian pepper is removed by on the ground spraying of the base of each pepper tree. This is being done alongside the main trails on both sides of the property.
- Objective
 - To remove the Brazilian pepper from the property and to keep the paths clear so they can be utilized throughout the year.
- Partners
 - SFWMD met with RES to determine the best method for treatment.
- Start/End Dates
 - Started in early 2008
- Status
 - Ongoing
- Funding (FY): Bureau of Indian Affairs
- Annual Summary
 - Approximately 2.3 miles of trail have been treated.



2008 Everglades Invasive Species Summit



Invasive Species Programs

- Mechanical Removal of Melaleuca at Miccosukee Resort and Casino and surrounding properties
 - Melaleuca is being removed from the property through a brontosaurus machine and mulched.
- Objective
 - To remove the thick melaleuca from the property so that the surrounding wetlands can be restored.
- Partners
- Start/End Dates
 - Summer 2006 - ongoing
- Status
 - Ongoing dependent upon the how wet the area is and the muck.
- Funding (FY): Tribally Funded
- Annual Summary
 - Almost all of the 179 acres that make up the back portion of the Resort Property, and approximately 150 acres on fee property adjacent to the Resort.



2008 Everglades Invasive Species Summit



Priority Plant Species

- **Priority Plants**

- Melaleuca, Brazilian pepper, Old World Climbing Fern, Tropical Soda Apple, water hyacinth, water lettuce.

- **Newly Detected Plant Species**

- No significant new detections



Priority Animal Species

- **Priority Animals**

- Pythons and other exotic snakes, channeled apple snail, Mayan cichlids, tilapia, Asian walking catfish, and many other African and South American fishes.

- **Newly Detected Animal Species**

- No new significant detections.



Monitoring

- Monitoring is done through visual inspections on the properties during our Spring and Fall Everglades Studies, or when we are out doing work on these sites. We visit many tribal properties throughout the year and document the changes seen, including the spread of invasive species. GPS points are taken of areas of interest so they can be followed up on the next year.



2008 Everglades Invasive Species Summit



Digital Aerial Sketch Mapping

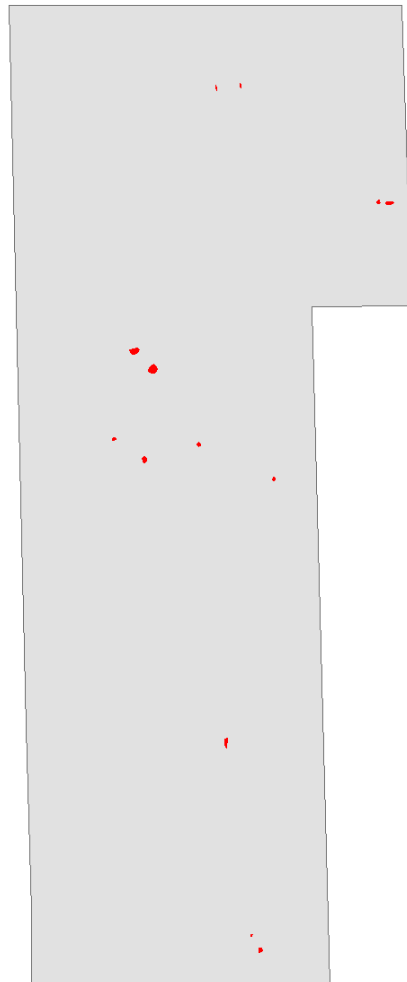


Miccosukee Tribe of Indians of Florida

Brazilian Pepper

<u>Coverage Class</u>	<u>Acres</u>
High	1200
Medium	2845
<u>Low</u>	<u>307</u>
Total	4351

Digital Aerial Sketch Mapping



Miccosukee Tribe of Indians of Florida

Melaleuca

<u>Coverage Class</u>	<u>Acres</u>
High	
Medium	4
Low	49
Total	53

Digital Aerial Sketch Mapping



Miccosukee Tribe of Indians of Florida

Old World Climbing Fern

Coverage Class	Acres
High	3
Medium	
Low	
Total	3

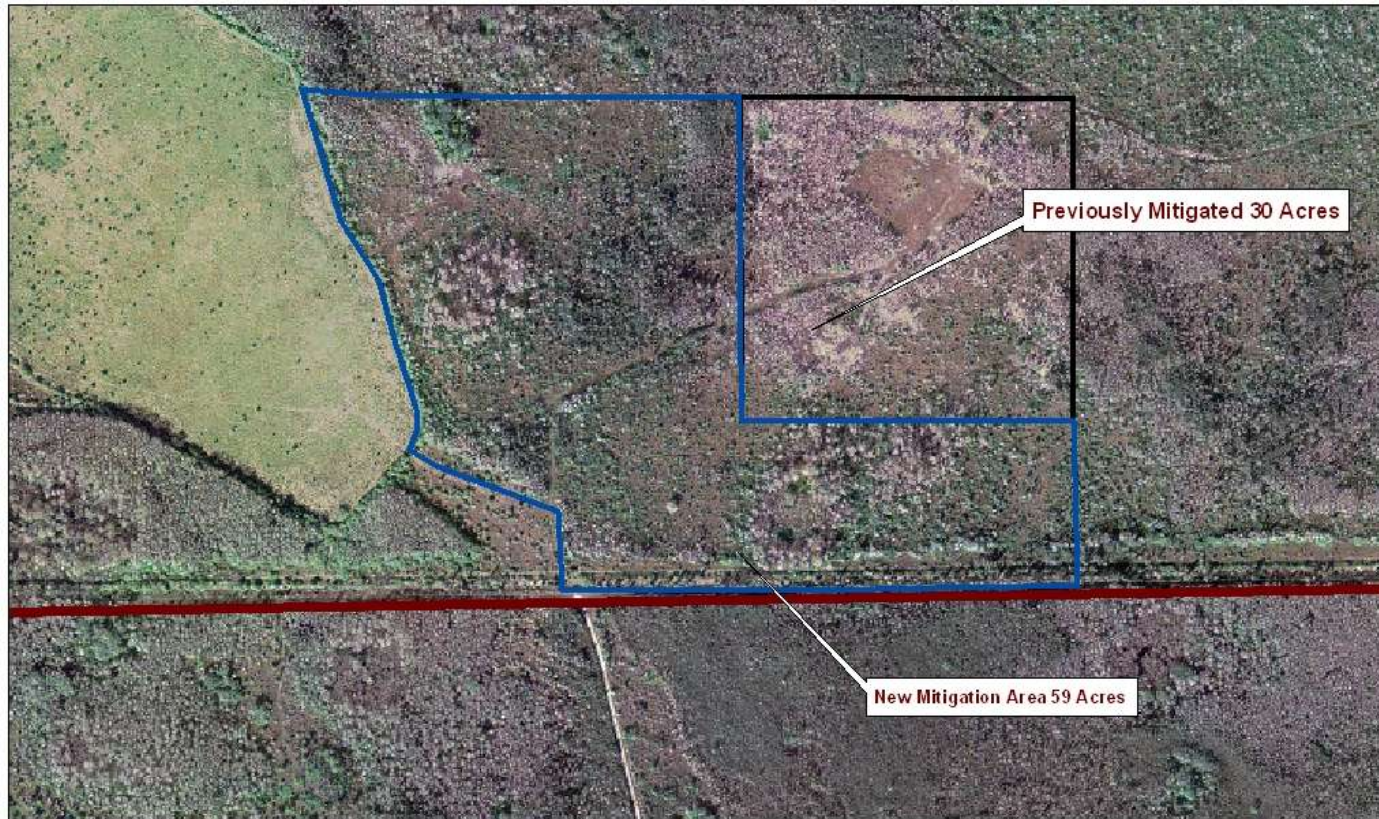
Burma Reed

Coverage Class	Acres
High	
Medium	20
Low	
Total	20

Napier grass

Coverage Class	Acres
High	
Medium	46
Low	
Total	46

Monitoring Maps





Sherrod Ranch: Hendry County Florida

Mitigation Site

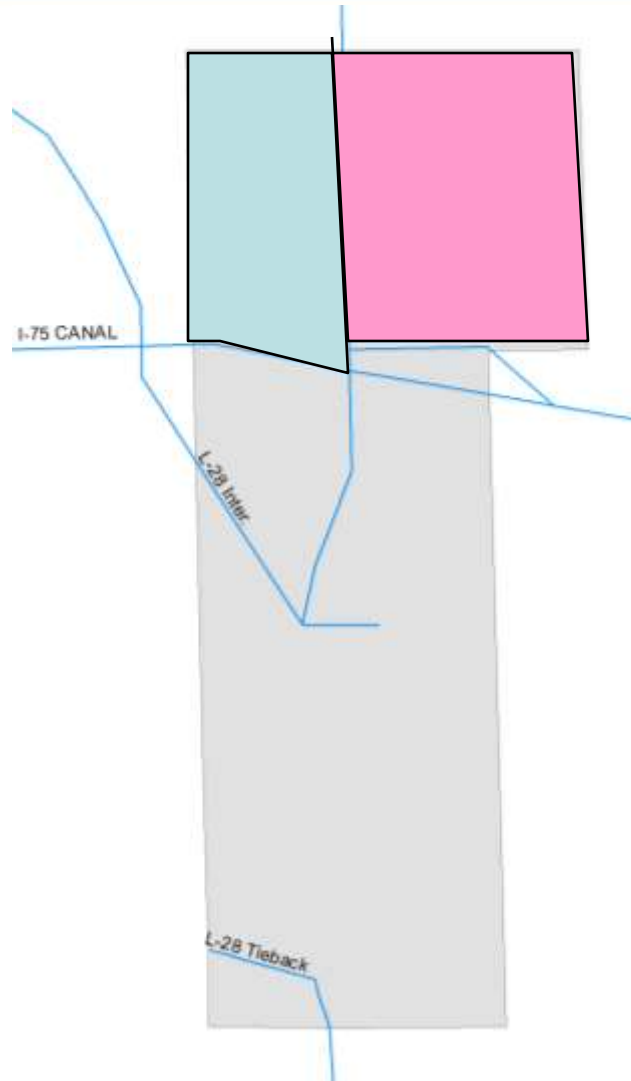


Map Produced by Miccosukee Real Estate Services, January 2006

Legend

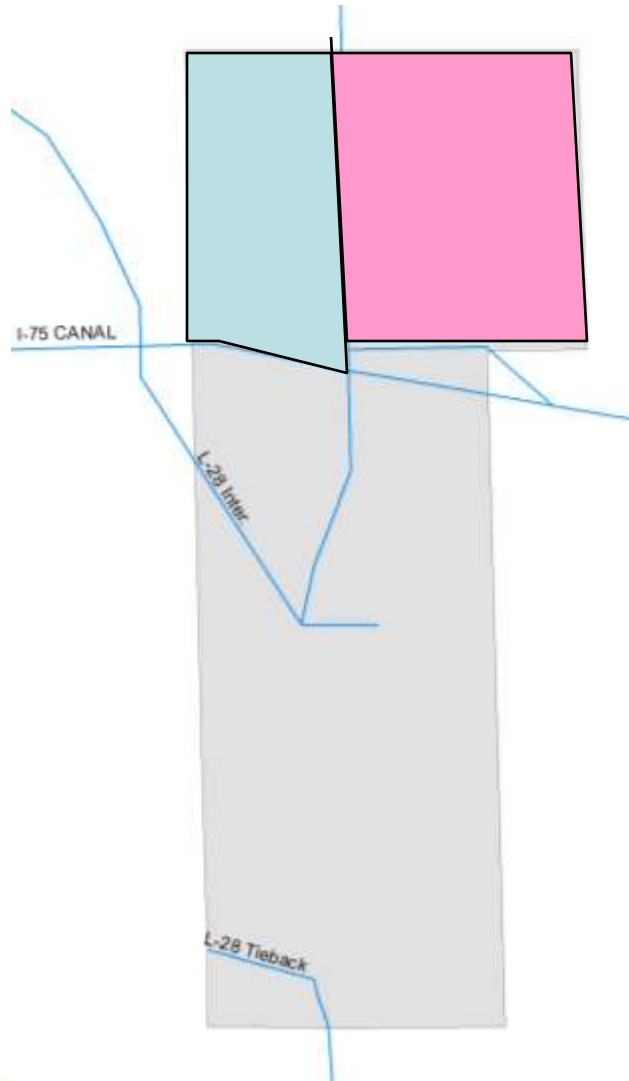
-  New Mitigation Area 59 Acres
-  Previously Mitigated 30 Acres

Fiscal Year Treatments: 2008



- On the western part of the cattle pastures on the Alligator Alley Reservation, Brazilian pepper will continue to be treated through a cattle lease with the Seminole Tribe.
- The eastern part of the AAR was spot treated for *Melaleuca* as it was found on the Spring Everglades Study.

Planned Treatments: {next FY period}



- On the western part of the cattle pastures on the Alligator Alley Reservation, Brazilian pepper will continue to be treated through a cattle lease with the Seminole Tribe.
- The eastern portion of the AAR will be treated for Melaleuca as it is found during our spring Everglades Study.

Innovations and Successes

- Manpower and funding are the main issues with controlling invasive species.
- Three people worked on the spraying of the Brazilian pepper during the cooler part of the year.
- Utilizing mitigation monies is an important technique in reviving tribal properties to their natural state. These lands are used for various cultural uses.

