

Operations Sub-Committee

LeRoy Rodgers, SFWMD

Lisa Jameson, USFWS

Jenny Ketterlin, FWCC

Jon Lane, USACE

Tony Pernas, USNPS

Paul Pratt, USDA

Jackie Smith, FFWCC

Dan Thayer, SFWMD



Operations Sub-committee Goals

- Promote **information exchange** related to control and monitoring of invasive plants and animals
- Promote **consistency in operations** and monitoring efforts
- Organize and seek funding for **collaborative projects**



2008-9 ECISMA Work Plan

- Based on input from Summit attendees
- Tasks assigned to each Sub-committee
 - Operations
 - Research
 - Outreach
 - Early Detection/Rapid Response



Highlights of 2009 Accomplishments

Operations Sub-Committee

- **Monitoring**
 - Region-wide Sketch Mapping
- **Information Management**
 - WEEDDAR
- **Biological Control**
 - Regional release strategy
 - Tracking & protecting release locations
- **Collaboration**
 - ECISMA Workdays




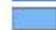
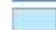
Regional Assessments

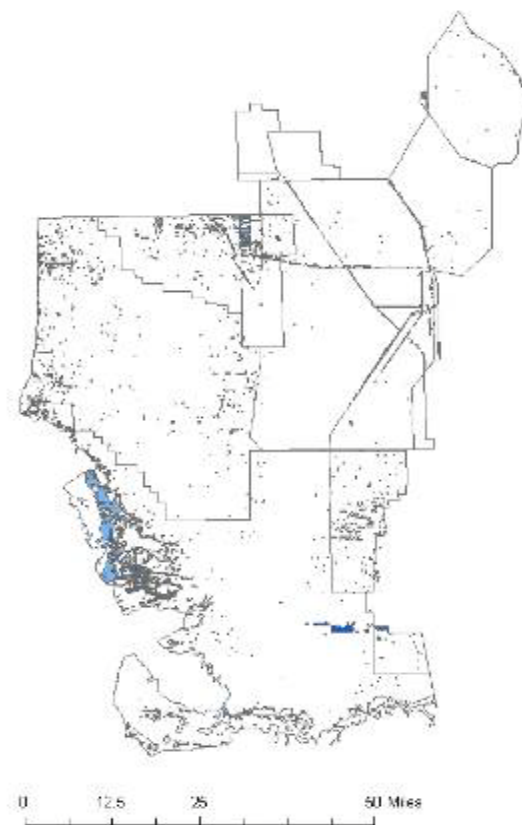
TASK: Complete digital aerial sketch map and analysis of invasive plant distributions in northern half of ECISMA



Digital Aerial Sketch Mapping

Legend

-  schinus_high (12,853 acres)
-  schinus_medium (42,021 acres)
-  schinus_low (2,790 acres)



Digital Aerial Sketch Mapping

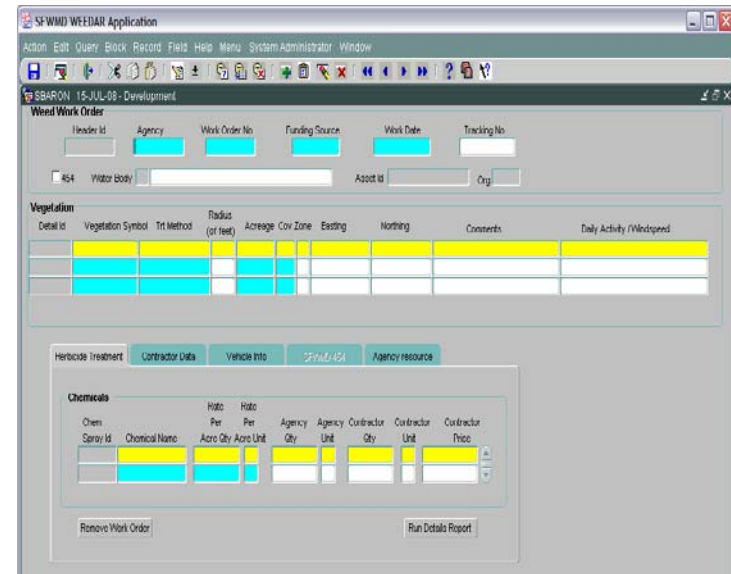
- 2009 mapping
 - Holeyland & Rotenburger WMA's
 - Loxahatchee NWR
 - Big Cypress Reservation
- **& Northern ½ of:**
 - WCA 2 & 3
 - Miccosukee Reservation
 - Big Cypress Preserve
- Revised percent cover categories
 - <5, 5-25, 26-50, 51-75, >75
- 2009 Cost: \$39,000 (*SFWMD*)
- Ground truthing in September
 - Seeking support from land managers



Information Management

TASK: Make WEEDDAR available to partners through CERPZone

- WEED Data And Reporting database now available to registered users of CERPZone.org
- Currently utilized by the SFWMD, USFWS, USACE, and USNPS
 - Contractors for these agencies now trained and entering data
- Still developing customized reports to meet individual program reporting requirements.



Information Management

TASK: Enter program data presented during the 2008 Summit into ECOSTEMS.

- Summit template developed in 2008 to ensure consistent reporting.
- Designed to collect information needed for the invasive species management tracking database, ECOSTEMS.
 - Still working on entering data



Information Management

TASK: Complete annual report for the Everglades CISMA.

- Steering committee to prepare annual report outlining accomplishments
 - Utilizing Summit updates
- Report will be posted on the CISMA website.



Biological Control

TASK: Prioritize locations for biological control agent releases.

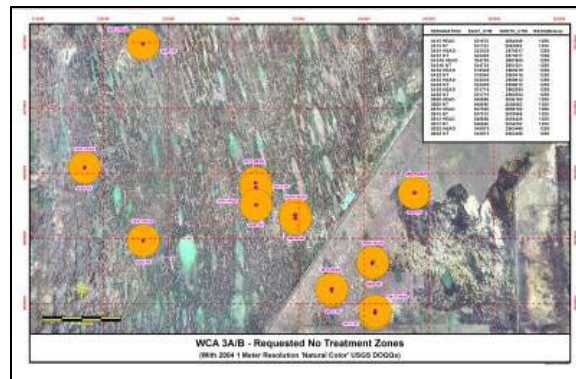
- Release location criteria circulated to land managers
- Sites identified during operational updates
- Requests will be forwarded to USDA and/or UF



Biological Control

TASK: Standardize methods for protecting biological control research sites on managed lands.

- Proposed marking system developed by *Anthony Boughton, USDA*
- “No-treatment” mapping system for contractors
- Future goal: Promote regional standard for marking system and no-treatment database



Collaboration

TASK: Work with partners and cooperators to implement invasive species work days.

- *Lumnitzera racemosa* (Combretaceae)
- Common name: Kripa
- Native range extends from eastern Africa to Western Pacific
- Related to white mangrove and buttonwood
- Planted at Fairchild TBG in late 1960's
- Eventually spread to adjacent mangrove...
- ...is now behaving badly



ECISMA Workday(s)

- ECISMA & Fairchild Tropical Botanic Gardens conducted three volunteer work days
- Attended by more than 50 ECISMA volunteers



It's Hard Work...



ECISMA Volunteers

ECISMA Workday (s)

- Kripa removed from 6 acres
- 9 acres of dense infestation remain



Fairchild Garden and Matheson Hammock - 2006 Aerial Photo

0 50 100 200 Meters



Collaboration

TASK: Identify funding opportunities.



- Submitted proposal for Pulling Together Grant
- Collaboration between ECISMA and Fairchild TBG
- Project Objective: **Eradicate** *Lumnitzera racemosa* from Fairchild and Matheson Hammock & develop outreach materials for continued EDRR



Proposed Activities for 2009-10

1. Contractor SOP
2. Kripa Eradication Grant
3. Map Weeds in ECISMA (*south*)
4. Ground Truth DASM data
5. Fence Line Project (e.g., *Tamiami Trail Brazilian Pepper project*)
6. Promote region-wide “no-treatment” database
7. GIS tools for invasive plant contractors
8. ECISMA Training
 - a. *WEEDDAR*
 - b. *Sketchmapping*
 - c. *Treatment Mapping with GPS*

