



South Florida

Toby Hairston
USDA/Wildlife Services

INSERT Map of this
property in relation to
ECISMA boundary

History/Background

- Wildlife Services is working with ECISMA to bring a certain skill set and knowledge of wildlife control to the table for invasive species.



Priority Animal Species

Sacred Ibis



Priority Animal Species

Nile Monitor Lizard



Priority Animal Species

Nile Monitor Lizard

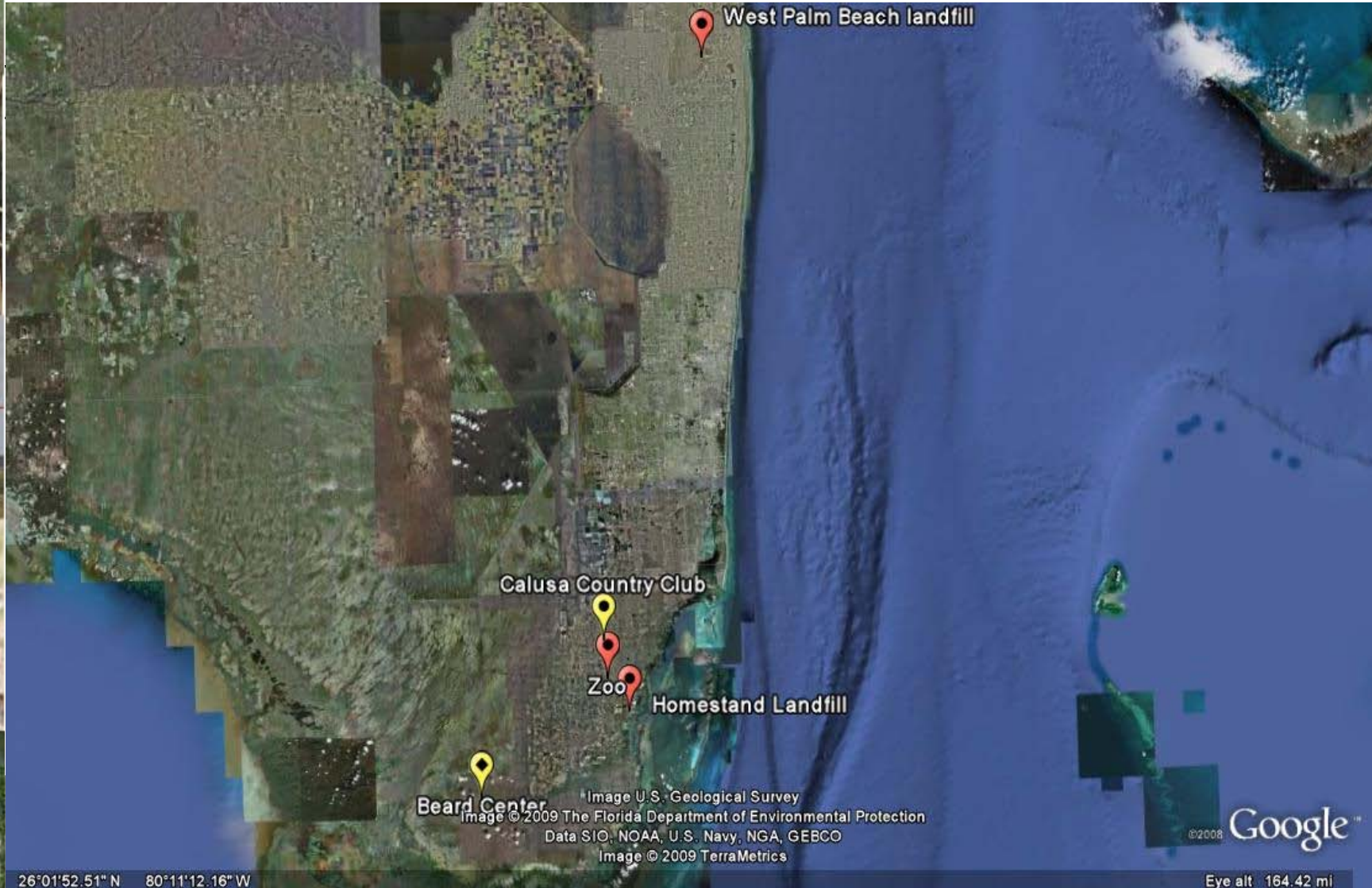


Invasive Species Programs

- **Rapid Response**
 - Respond to Invasive Species for control
- **Description**
 - Sacred Ibis; Nile Monitor Lizards
- **Objective**
 - Determine if control actions are feasible and take action
- **Partners**
 - USFWS, NPS, US Forestry Service , Everglades Foundation , Tribal Lands, SFWMD
- **Start/End Dates**
 - August 2008 –on-going
- **Status**
 - Sacred Ibis- assigned
 - Nile Monitor Lizards- unassigned
- **Funding (FY 2009):**
 - ECISMA / Everglades Foundation.
 - Homestead Air Force Reserve Base
- **Annual Summary:**
 - Sacred Ibis-
 - Nile Monitor Lizards- 10



Sacred Ibis removal and sightings



26°01'52.51" N 80°11'12.16" W

Eye alt 164.42 mi

Nile Monitor Removals and Sightings



Image U.S. Geological Survey

©2008 Google

Planned Treatments: {next FY period}

- Sacred Ibis
 - Continue monitoring bird boards
 - Relying on information from people in the field
- Nile Monitor Lizards
 - Actively hunt monitors on base
 - Continue to devise new trapping methods, baits and Lures



Innovations and Successes

- Sacred Ibis

- Used Miami Metro Zoo as a platform for control techniques

- Decoy traps- Sacred Ibis decoy well in traps

- Night shoots

- Low level light (green, red) do not disturb birds on roost

- Night vision is not clear enough to distinguish species in roost

- Suppressed .22 rifle does not disturb roost

- Sacred Ibis are the last birds to go to roost



Disappointments & Aggravations

- Nile Monitor Lizard
 - Current trapping methods are not efficient
 - Traps
 - bait

