

## **2009 EVERGLADES INVASIVE SPECIES SUMMIT**

# **ECISMA - Early Detection/Rapid Response Subcommittee Report**

### **Co-chairs**

**Art Roybal, USFWS  
Scott Hardin, FLFWCC  
Skip Snow, USNPS (ENP)**

### **Members**

**Tony Pernas, USNPS, Plants  
Kris Serbesoff-King, TNC, Plants  
Ellen Donlan, SFWMD, Herps  
Jenny Ketterlin, FLFWCC, Mammals  
Jim Cuda, UF, Insects/Invertebrates  
Bill Loftus, USGS, Fish  
Jeff Kline, USNPS, Fish  
Dale Gawlik, FAU, Birds  
John Humphrey, USDA**

**“The Everglades Cooperative Invasive Species Management Area is a formal partnership of federal, state, and local government agencies, tribes, individuals and various interested groups that manage invasive species within the greater Everglades area ”**

# **Early Detection and Rapid Response Plan for the Everglades Cooperative Invasive Species Management Area**

**DRAFT**

**June 12, 2009**

**Florida Department of Transportation | Florida Power and Light | Florida Fish and Wildlife Conservation Commission | South Florida Water Management District | United States Army Corp of Engineers | United States Fish and Wildlife Service | United States National Park Service | United States Dept. of Agriculture | The Nature Conservancy | Miccosukee Tribe Seminole Tribe of Florida**

# Early Detection and Rapid Response Plan

- To provide a conceptual design, framework, and set of strategies to minimize the establishment and spread of new invasive exotic species within the ECISMA through a coordinated framework of partners and processes.

# Early Detection and Rapid Response Plan

- Pre-determined management responses, and establishes a decision-making infrastructure
- The plan contains 5 objectives and related tasks
- A rapid response action planning protocol

# Successful CISMA EDRR efforts will include:

- A thorough and efficient detection system combined with immediate implementation of control/eradication measures
- A monitoring system for each species on the CISMA list of known invasive species so that new introductions can be detected in a timely manner
- Emergency funding in place for a rapid response from the existing control programs

- A mechanism to provide funding, authorized staff, permits, and other resources needed for immediate response to known invasive species which do not fall within an existing control program
- A reporting system for chance encounters by the public with known invasive species. Educational outreach efforts will enhance the ability of the public to make good reports.

- A designated pool of experts to verify the identification of known invasive species and other potentially harmful species.
- A designated pool of experts and risk managers to quickly decide whether a newly discovered potentially harmful or known invasive species deserves rapid response.
- A system for smoothly transitioning to ongoing control from rapid response efforts when eradication has failed or when the species is discovered to be wider spread than initially believed.
- An adaptive management system so that lessons learned from past efforts guide future efforts.

# Assumptions Guiding Plan Implementation

- Eradication, not control in perpetuity, is the ultimate objective
- Expenditures of CISMA time and money are expected to focus on species that present the greatest economic or environmental risks and are determined to have a reasonable expectation of eradication
- Existing local, state, tribal, and federal authorities, responsibilities, and cooperative agreements will be incorporated into response activities whenever possible.

- Because invasive species do not recognize political boundaries, CISMA rapid response capabilities created may also contribute to regional containment .
- Response actions will encourage cooperation and partnership across government and private sector programs.
- Because eradication without restoration may leave an area vulnerable to re-infestation or infestations of other types, rehabilitation and restoration of the invaded habitats will be an integral consideration in response planning.

# **Objective 1: Ensure Early Reporting of New Invasions**

- **1.1 Design and Implement an Integrated Monitoring Plan**
- **1.2 Establish a Centralized Reporting System**
- **1.3 Modify Existing Websites**
- **1.4 Develop an Outreach and Communication Strategy**

## **Objective 2: Ensure New Species are Identified and Their Risks Assessed**

- **2.1 Compile Prioritized EDRR Invaders Lists**
- **2.2 Compile an On-Call Expert List**
- **2.3 Develop a Risk Assessment Methodology**

# **Objective 3: Define Decision-making Responsibility and Response Protocol**

- **3.1 Develop Process to Assign Responsibilities**

**ENTRYPOINT**  
Suspected new  
Species detected

Reporting to the  
ECISMA EDRR Chairs

**?? days**

**YES**

Species "listed"?

**NO**

**Unlisted Species (few)**  
Joint decision by EDRR Chairs  
based on statutes, taxonomy, environment,  
native species, or citizens at risk, etc.

**YES**

Agreement?

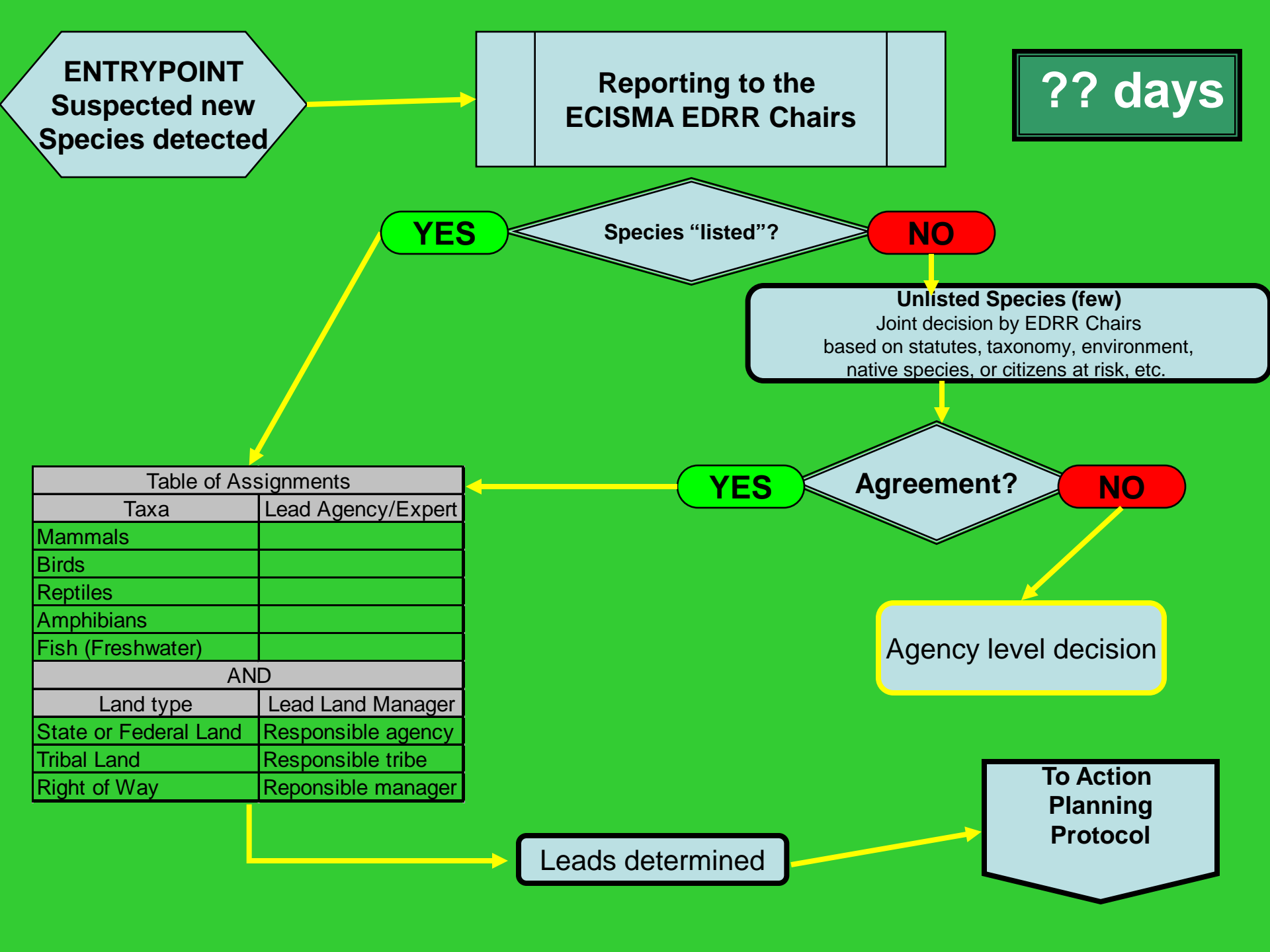
**NO**

Agency level decision

Table of Assignments	
Taxa	Lead Agency/Expert
Mammals	
Birds	
Reptiles	
Amphibians	
Fish (Freshwater)	
AND	
Land type	Lead Land Manager
State or Federal Land	Responsible agency
Tribal Land	Responsible tribe
Right of Way	Responsible manager

Leads determined

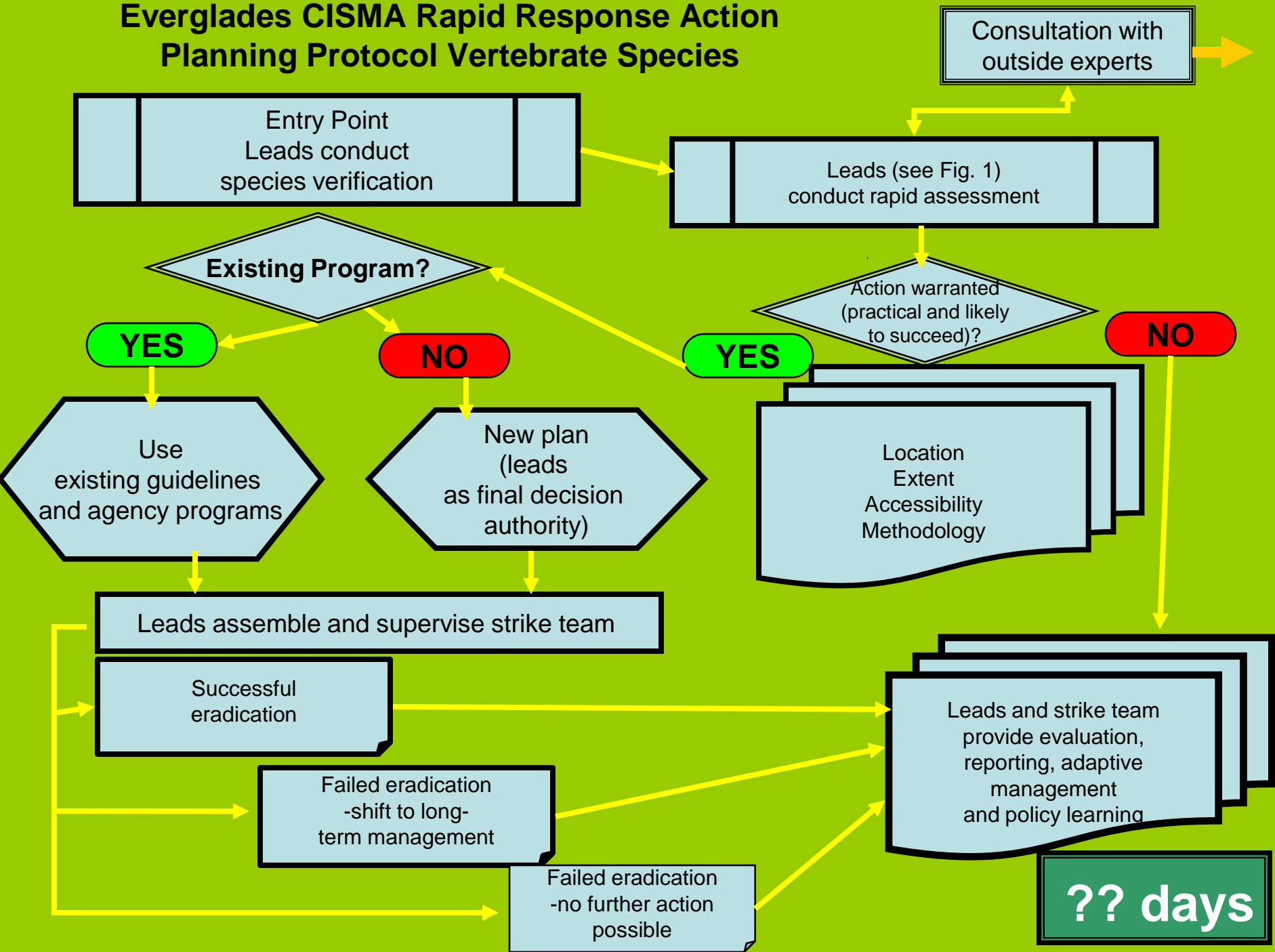
**To Action  
Planning  
Protocol**



# **Objective 3: Define Decision-making Responsibility and Response Protocol**

- **3.1 Develop Process to Assign Responsibilities**
- **3.2 Develop a Rapid Response Action Protocol**

# Everglades CISMA Rapid Response Action Planning Protocol Vertebrate Species



# **Objective 4: Establish and Maintain Capacity to Act**

- **4.1 Establish a Rapid Response Fund**
- **4.2 Develop a Rapid Response Checklist**
- **4.3 Compile Eradication and Control Libraries**
- **4.4 Identify Barriers and Constraints to Rapid Response**
- **4.5 Remove Barriers and Constraints**
- **4.6 Develop Model Response Plans**
- **4.7 Develop and Conduct Training for Rapid Responders**

# **Objective 5: Incorporate Adaptive Management Principles in Plan Implementation**

- **5.1 Review Plan Implementation and Associated Procedures**
- **5.2 Amend Plan and Procedures to Reflect New Technology and Lessons Learned**

# Other Accomplishments

- *Early Detection/Rapid Response Task Order Issuance Standard Operating Procedure Finalized*
- *Written Report Submitted to the Everglades Foundation on Sacred Ibis Control*



I 48  
USDA/NIS  
852-567-2229



**Questions ?**